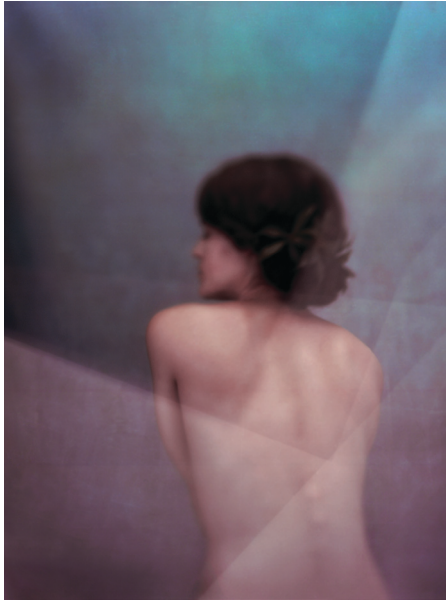




cf
GALLERY

COLOUR FACTORY GALLERY

The Lines Between



**Tess Kelly &
Julia Norlander**

03/02/11 - 26/02/11

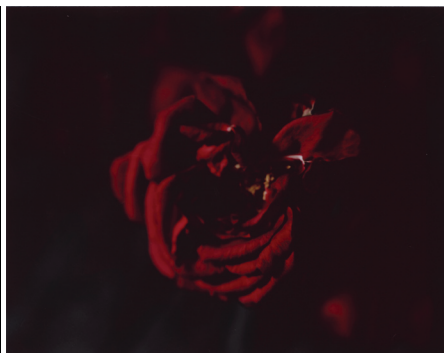
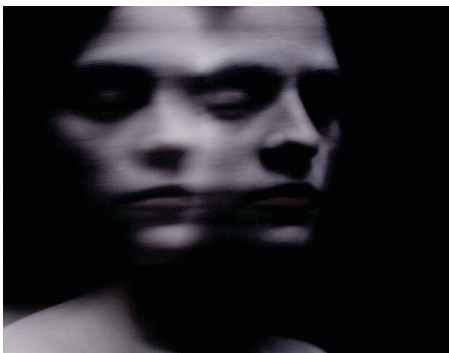
cf
GALLERY
COLOUR FACTORY GALLERY

Julia Norlander 2011

Dreams have always had a great importance in my emotional life - in a figurative sense. My photography is an investigation into my own dreams and a search for a visual interpretation of an emotional experience. This is a feeling that lives in our subconscious and reveals itself in our dreams – an unreality within reality.

In my work I am portraying these elements of dreams and illusions, by making use of symbolism, experimental capture techniques, colour and shape. As this topic is quite subjective and illusory, it has allowed me to explore various imagery techniques in analogue capture to create an other worldly impression. Experimentation such as variable processing and camera movements, the use of materials in front of lens and alternative lighting setups, has given my images a uniqueness, like that of a dream. These sorts of in camera techniques produce distinctive and uncommon results, rather than a widespread electronic re-interpretation.

Sensuality and a feminine softness have always underpinned the personal, quite romantic aesthetic of my photographic imagery. However my work is often suffused with esoteric and mystical intangibility. Elements of fear, darkness and isolation permeate the imagery. Like in dreams, lightness and darkness are in equal measure.





Julianorlander@gmail.com
Aus mob: +61 41 11 92 440
Swe mob: +46 76 16 12 0 50
julianorlander.carbonmade.com